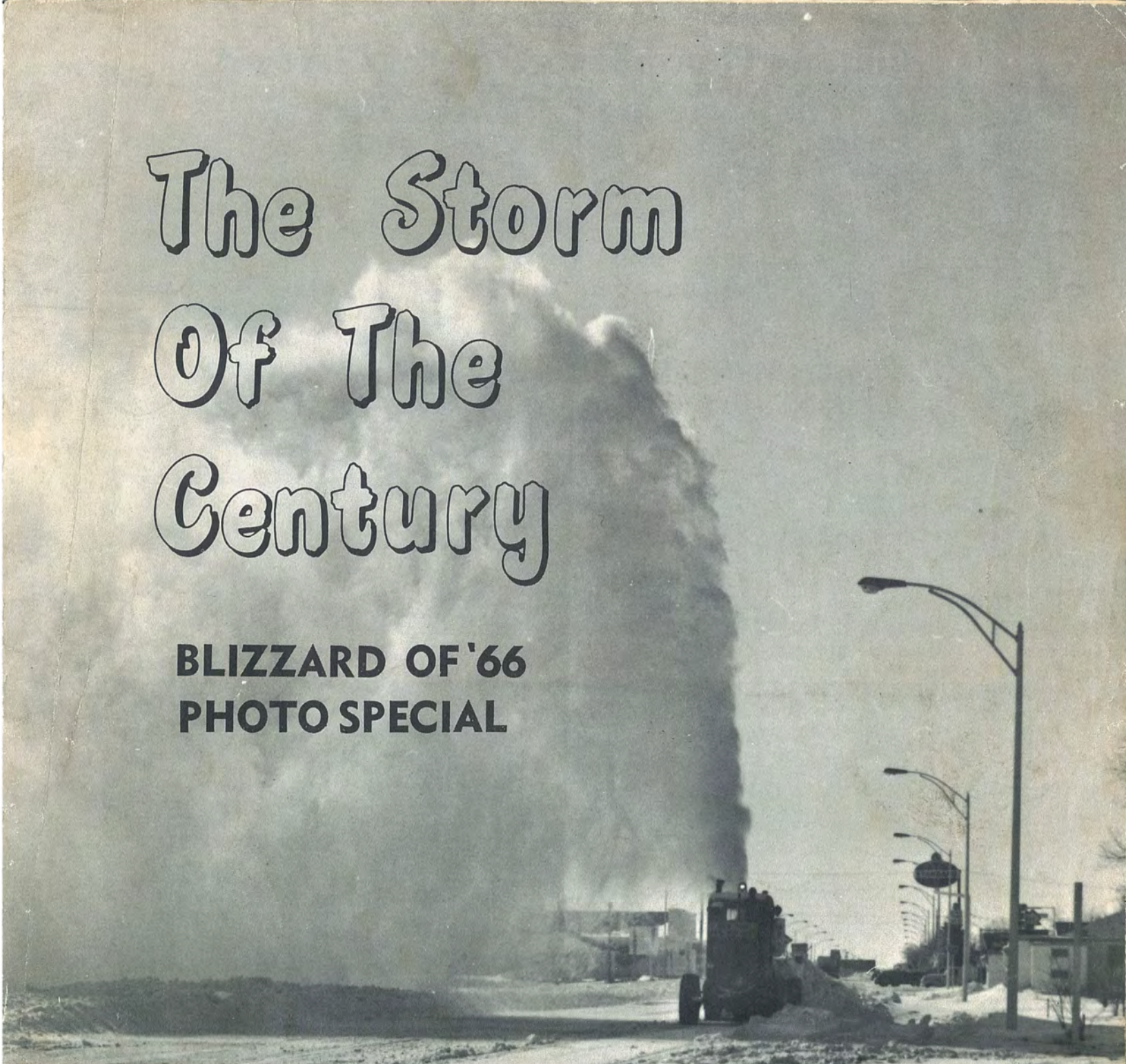


The Storm Of The Century

**BLIZZARD OF '66
PHOTO SPECIAL**



SOUVENIR EDITION -- MARCH, 1966

MORNING PIONEER

Cover Picture: Going West On Main In Mandan, N. D.



Pioneer Photo Record of the Blizzard on Main in the Sister Cities



BISMARCK: Digging out a car on Main - Between Fourth and Fifth



MANDAN: Drifts higher than a pedestrian were a problem



Penneys and Dahnners had snow up to the awnings on Mandan's Main Street.



At right is Mandan Chamber of Commerce office, Main Street, Mandan.



Going down Sixth Avenue hill south of the Mandan Hospital there was plenty of white stuff.



Marion Park, Bismarck saw more snow than ever before.



Boulevard, Bismarck was among the deepest buried streets.



Fleck's garage, Bismarck, was drifted in deep.



L. G. Ferguson home 226 West Divide Bismarck was deep in snow as the tractor was busy at the garage door.



O'Hara home, 124 W. Arikara, Bismarck, from Washington street looking east.



South of the capitol at Fourth and Boulevard the cars and plows take their turn through a single lane.

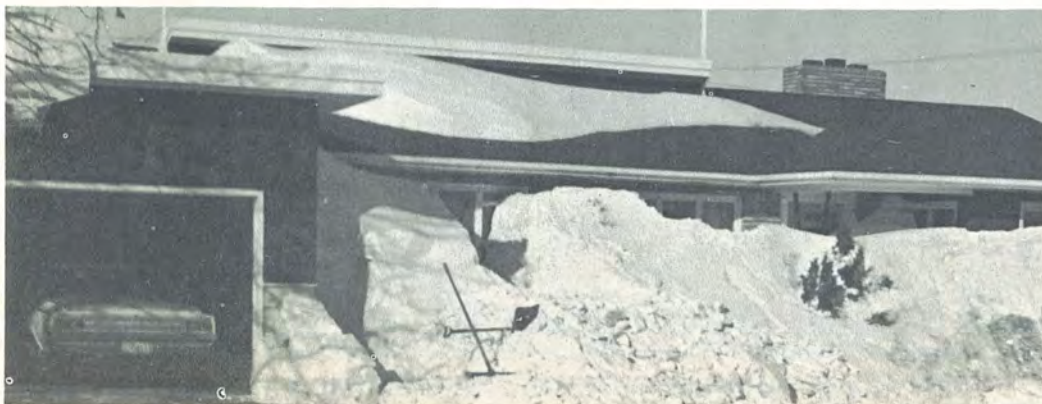
PIONEER LENS VISITS RESIDENTIAL AREAS



A wasteland of snow in Mandan is typical of the storm's wake.



It looked like a mountain to her and to the photographer, too.



Dr. Beck's house on Boulevard avenue in Bismarck was up to the eaves.

Souvenir Pictorial special printed in Bismarck on the offset presses. Most photos by the Pioneer staff. Those from the Minot AFB and the Associated Press are marked with proper credits. The Morning Pioneer is published six days a week and Subscriptions are \$12 per year.

Pioneer
Main and Mandan
Bismarck, N. D.

Pioneer
First Street and
Second Ave.
Mandan, N. D.

PIONEER PICTURES SHOW RECORD 21 INCH SNOWFALL

BISMARCK-MANDAN

STORM STATISTICS "BLIZZARD OF '66"

Noon, March 2, 1966, Wednesday
Evening, until March 4, 1966, Friday.
Total Snow 22.4 inches
Thursday Snow 15½ inches
Maximum Wind
Velocity 52 miles per hour
Temperature High 29 degrees Wed.
Temperature Low 8 above Friday
All Bismarck-Mandan Stores closed
Thursday and Friday. All city streets
impassable for traffic.



Like gnomes on the train, shoveling workers dig out North Coast Limited, N. P., near New Salem, N. D. Photo by Bob Barclay



Looking west on Thayer towards Wards and the Telephone Company.



Looking up Main in Bismarck.



Main in Mandan - Note pedestrian is up in the air on the drift.



Cars were buried deep at Holiday Inn, Bismarck.

"Thar's a car in that there drift!"



An ambitious home owner starts digging his way into a big drift.....



.....and lo and behold there is his buried automobile. Photo by Currie Conrad



Shovels are busy at Second and Main, Bismarck.



Everyone who shoveled knows how his back felt. This is at Fleck's garage, Bismarck, where gas pumps went under.

PIONEER CAMERA REVEALS SNOW, MORE SNOW



Main Street, Mandan, visible over top of drifts.



National Guard helps out.



Cleanup at the Penney store, Fourth and Main, Bismarck



Trailer Park is "pedestrian only" traffic and cars are stuck.



Second and Main
Corwin Churchill Motors, Bismarck



The hood of a buried car at Holiday Inn is just visible.



Avenue C and Griffin, Bismarck, beneath the stop light.



One way traffic only.

ORDER EXTRA COPIES
Three for \$1
MORNING PIONEER
Box 310 Box 458
Bismarck, N. D. Mandan, N. D.

MORE SOUVENIR ISSUES
ARE AVAILABLE



This rotary was working at Mandan.

Morning Pioneer Souvenir Special

"THE STORM OF THE CENTURY"



Nearly dug out is this car on Main Avenue and Fifth, Bismarck across from the Patterson Hotel.



Main street, Mandan, Saturday afternoon, March 5.



Cars are stuck in the drift in front of the Quain & Ramstad Clinic



Everyone's shoveling - Nuns in Mandan clean up the heavy snow.



Frosting on the top of the car remains in place after vehicle is free!



Familiar scene is along Broadway in Bismarck where man-sized drifts block the view.

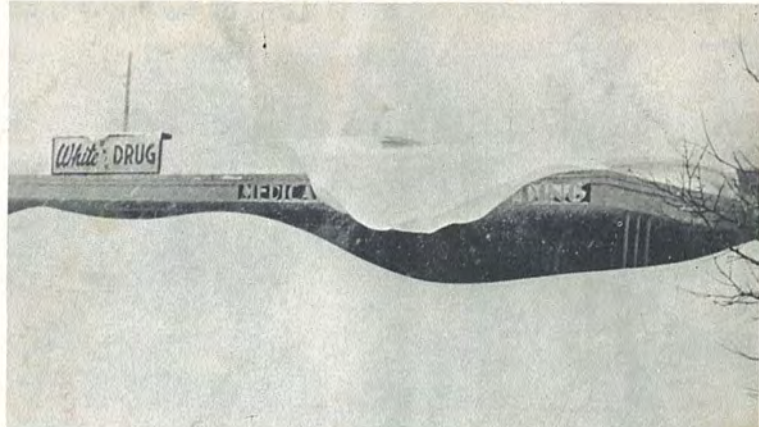


A plow roars down East Main in Bismarck.

ASSOCIATED PRESS PHOTOS FROM STORM AREA



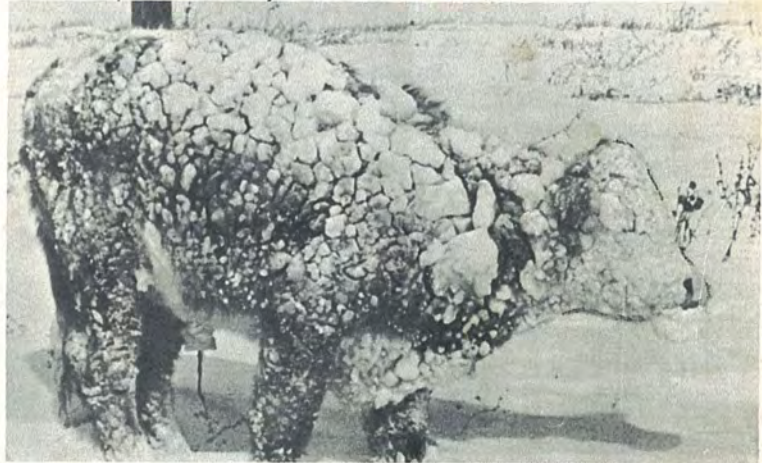
House cleaning time - The Robert Mickel home north of Fargo is almost buried. AP Photo



White Drug store is really white in Grand Forks, N. D., also hit by storm. AP Photo



Minot AFB helicopter lands on a mission of mercy to farm home. AFB Photo



Calf in northern South Dakota is survivor. AP Photo



Farms and tree studded areas took worst lashing Minot AFB Photo



Arrows point to buried car headlite and top near Norton Garage on Main in Bismarck. The man with shovel will be tired of snow tonight. Pioneer Photo

**Another Photo
Feature
of the
MORNING PIONEER**

Bismarck-Mandan